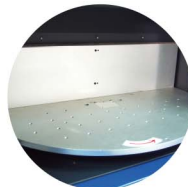


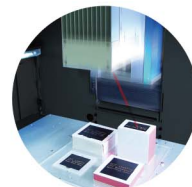
## Optional Items



Rotary Attachment



Rotary Table



MultiFOCUS



Screen Frame Module



Air Extraction System

Specification		LFC II Workstation
Model	LFC II	
Available Laser Marker	CIIA / CIIP / CIIS / IFII / IFIS Series	
Scan Lens	CO <sub>2</sub>	70 x 70 mm, 140 x 140 mm, 200 x 200 mm, 300 x 300 mm
	Fiber	70 x 70 mm, 110 x 110 mm, 180 x 180 mm
Front Door	Automatic door	
Max. Loading	50 kg	
Z-axis Travel	385 mm	
Safety Class	Class 1 (EN60825-1)	
Software	G-Mark Basic / G-Mark Library	
Operating System	Microsoft Windows XP / Vista(32/64 bit) / 7(32/64 bit) / 8(32/64 bit) (Desktop or Laptop PCs)	
Interface	USB x 1, VGA x 1	
Power Supply	AC Auto Switching 110 - 240 VAC, 50-60Hz / Single Phase	
Power Consumption	1650W	
Operating Temperature	15°C ~35°C	
Operating Humidity	10 ~ 80% Non condensing	
Dimension	1585 (L) x 852 (W) x 1745 (H)	
	1854 (L) x 1192 (W) x 2050 (H) mm (with package)	
N.W.	235 kg	
G.W.	580 kg	
Optional Item	Rotary Table (Ø 650 mm, 2 station)	
	Screen Frame Module	
	MultiFOCUS	
	Air Extraction System	

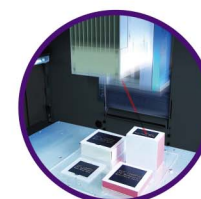
\* Please visit [www.GCCworld.com](http://www.GCCworld.com) for more detail.

△ Specifications are subject to change without prior notice.

GCC LaserPro

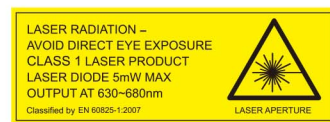
# LFC II Workstation

Industrial Laser Marking Workstation  
Design with Your Safety and Convenience in Mind

Authorized Dealer

**JORLINK.COM**  
T: 336.288.1613  
sales@jorlink.com

[www.GCCworld.com](http://www.GCCworld.com)


- Class 1 (EN60825-1) safety workstation
- Sturdy and rigid steel chassis to meet industrial requirement
- Various configurations: Standard Table, Rotary Table
- Compatible for all GCC LaserPro StellarMark C & IF Series laser markers
- Large working space to load max. 300 (H) x 300 (W) x 380 (L) mm work pieces
- Large protection window for easy working process monitoring
- Internal LED lighting illuminates the working space



Color Marking

Metallic Part Marking

IC Marking

Keypad Marking

Metallic Parts Marking

Jewelry Marking

Plastic Marking

Laser Marker

# GCC LaserPro LFC II Workstation

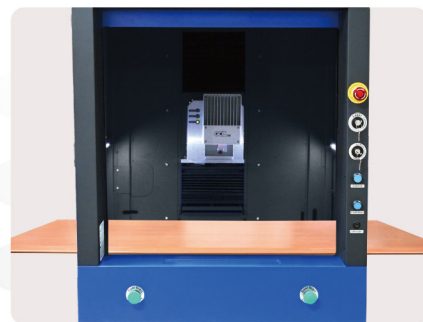
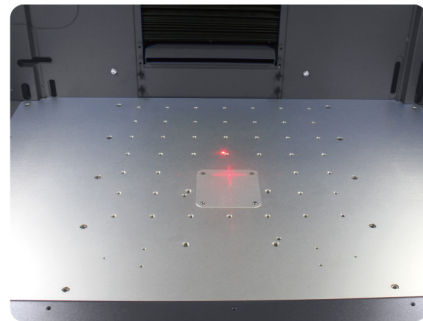


## Industrial Solution

LFC II Workstation integrates various processing modes and exclusive accessories to meet customers' need. 700 x 400 mm working table is able to place large objects and setup fixtures effortlessly. LFC II Workstation is considered a class 1 (EN60825-1) device to ensure user safe and sound is the best industrial solution.

### Standard Table

Standard table with matrix M6 circular slots for fixture mounting, working objects setup is more than easy.



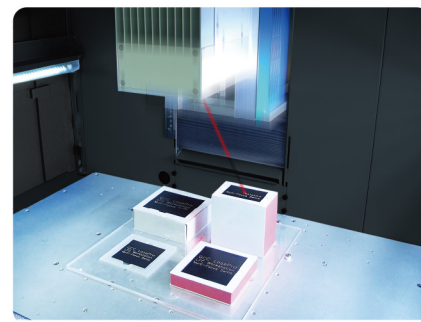
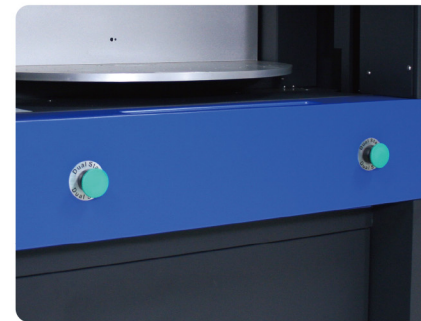
### Pass-Through Door

The left and right pass-through doors can be further removed to place long objects or allow external setup conveyor to feed in materials for laser marking on fly.

\* When the right door and left door are open, machine becomes a Class 4 equipment and users must wear goggles to operate the machine.

### Dual Start Button

Advanced secure protection by simultaneously pushing the Dual Start buttons to fire laser.

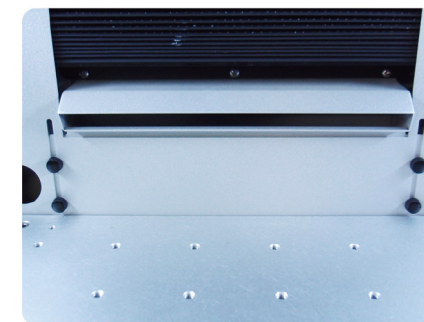


### MultiFOCUS (Optional)

MultiFOCUS function allows to define multiple focus distances according to different height of working objects at once, the Z axis will automatically move to correct position to deliver precise laser marking jobs. Laser marking on different height working surface in one shot now is possible.

### Emergency Stop

Big red button located on the right of machine allows operators to stop the laser and AC power immediately to provide highly safety operation.



### Clean Work Area

Integrated vacuum pipe for extraction particles created during laser processing.

### Automatic Safety Door

Automatically controlled front door open and close to secure safety operation.



### Key Switch

Key Switch manages different authority levels between Service Mode and Operator Mode to restrict unauthorized access to the production setups.