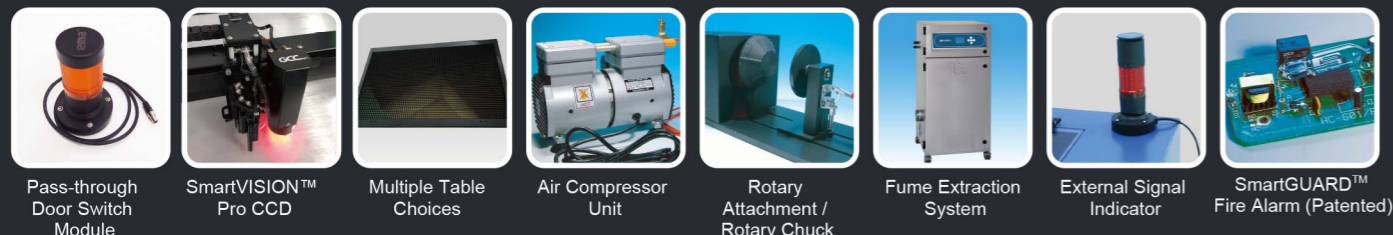


## Optional Items



Specification		S400			
		CO2		Fiber	Dual
Work Area		40 x 24 in. (1016 x 610 mm)			
Max. Part Size (L x W x H)	All doors closed	41.4 x 25.4 x 11 in. (1053 x 647 x 280 mm)			
	All door open	41.4 x ∞ x 11 in. (1053 x ∞ x 280 mm)			
Table Size		Standard Grid Cutting Table 40.1 x 24.1 in. (1019 x 613 mm)			
Dimensions		56.7 x 34.5 x 41.3 in. (1440 x 900 x 1048 mm)			
Weight	CO <sub>2</sub> 30W~40W	260 kg / 573 lb			
	CO <sub>2</sub> 60~100W	270 kg / 595 lb			
	Fiber 20W~60W	260 kg / 573 lb			
Laser Source		10.6-μm CO <sub>2</sub> laser	9.3-μm CO <sub>2</sub> laser	Fiber laser	10.6-μm CO <sub>2</sub> laser: 30 to 120W 9.3-μm CO <sub>2</sub> laser: 60W
		30~120W	60W	20 / 30 / 60W	Fiber laser: 20 / 30 / 60W
Cooling		Air-cooled, Operating environment temperature 15°- 30°C (59°- 86°F)			
Drive		Closed-loop DC servo control			
Maximum Motor Speed		140 IPS			
Speed Control		Adjustable from 0.1~100% (Up to 16 color-linked speed settings per job)			
Power Control		Adjustable from 0~100% (Up to 16 color-linked power settings per job)			
Engraving Capability		256-level gray scale image processing capability			
Distance Accuracy		0.254 mm or 0.1% of move, whichever is greater			
Z-Axis Movement		Automatic			
Focus Lens		CO <sub>2</sub> : Standard 2.0" (Optional 1.5", 2.5" & 4.0") Fiber: Standard 2.0" (Optional 4.0") Dual (CO <sub>2</sub> +Fiber): Standard 2.0" (Optional 3.0" & 4.0")			
Resolution (DPI)		Available 125, 250, 300, 380, 500, 600, 760, 1000, 1500			
Computer Interface		10 Base-T Ethernet USB-A for USB storage USB-B 2.0 for connection			
Compatible Operating System		MS Windows 64 Bit			
Control Panel		Touch Screen			
Safety		Class I Laser Product Complies with EN60825-1:2014, EN ISO 13849-1:2015 Class II Laser Product Complies with CDRH for CO <sub>2</sub> Laser Class 3R Laser Product Compliant with CDRH for Fiber & Dual Laser sources 2006/42/EC Machinery Directive Compliance Class 4 Laser Product Compliant with CDRH with the optional pass-through door module			
Operating Voltage		Below 80Watt, 100-240VAC, 50/60HZ Auto Switching, max. 15A 80Watt and above, 200-240VAC, 50/60HZ Auto Switching, max. 15A			
Fume Extraction System		External exhaust system with minimum flow rate 800m3/h (CFM 471 ft3/h) is required, 2.3kPa negative pressure (Pure-Air PA-1500FS @ 4" exhaust port)			

\*\* Speed is not equal to throughput. See dealer or visit [www.gccworld.com](http://www.gccworld.com) for more detail.  
 ▲ Specifications are subject to change without prior notice.

Authorized Dealer

**JORLINK USA, INC.**  
**sales@jorlink.com**  
**Tel.: (336) 288-1613**

[www.GCCworld.com](http://www.GCCworld.com)

886-2-6616-6692 Fax : 886-2-2694-6875  
 86-512-5726-1515 Fax : 86-512-5726-1518  
 31-10-458-9367 Fax : 31-10-451-9874  
 1-909-718-0248 Fax : 1-909-718-0251  
 US & Canada Only Toll Free: 1-888-284-5211

**GCC**  
**LaserPro**

**JORLink**  
**.com**

# The Flagship Model of The Laser Engraver

Your Best Ever, Beyond Expectation,  
 Unlimited Laser Machine.



**Laser Engraver**  
**S400**

- 40" x 24" x 11" (1016 mm x 610 mm x 30 mm) extra large working area
- 140ips high speed with DC servo motor for precise and rapid movement of the laser carriage
- GCC SmartFLOW™ technology provides outstanding dust protection
- GCC SmartLID™ invention makes maintenance a lot easier
- QSM (Quality Speed Mode) maintains 100% engraving quality while operating at maximum speed
- Patented SmartACT™ motion control technology increases your productivity by reducing ramping process and job running time
- Drag and engrave feature assures remarkably easy and fast set-ups
- Pass-through front and rear doors to accommodate long working pieces
- CO<sub>2</sub> and Fiber laser option in one laser machine

**GCC**



**Schedule**  
**GS-21F125AA**

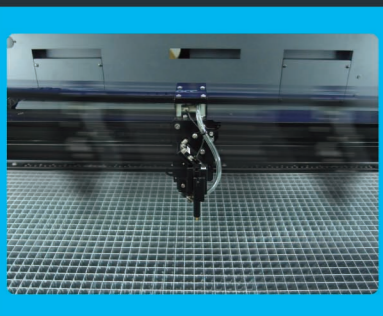
# GCC LaserPro S400



## Laser Engraver GCC LaserPro S400

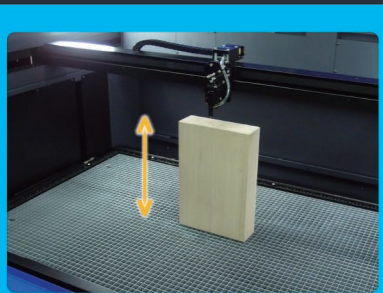
Inherit all the advantages from Spirit Hybrid, a brand new machine – S400 features 140ips processing speed by DC servo motor, innovative touch panel, user friendly interface and a modern good looking design. Together with SmartFLOW™ dust prevention technology and SmartLID™ easy access invention, S400 presents you the highest throughput and precise laser quality. GCC S400 makes all your imaginations to life at the speed of light.

## Features



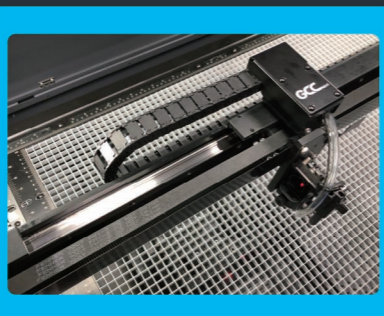
### Perfect Cutting and Engraving Throughput

Maximum 140ips processing speed with powerful DC servo motor to boost productivity while maintaining precision.



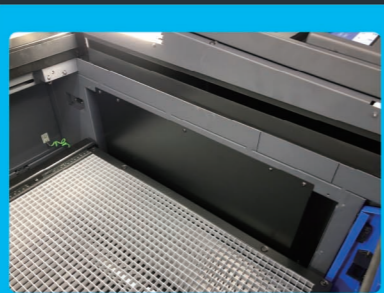
### Higher Working Depth

Depth of Z-axis up to 11" (280 mm) thick.



### SmartSEAL™ Technology

New gantry design to prevent dust, the easy take-off cover also makes the maintenance a lot easier.



### Dust Prevention

Incorporating metal panels to protect key components, but not seal entirely to ease any difficulty of maintenance.



### SmartFLOW™ Technology

SmartFLOW™ invention creates a perfect Air Flow to enhance the vacuum effect and bring out the dust completely while working.



### SmartLID™ Easy Access

Easy access design simplifies maintenance.



### Intuitive Touch Screen

Operation is easy and intuitive with the 4" touchscreen.



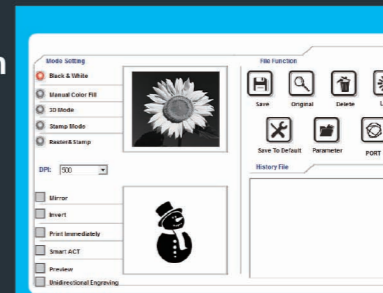
### SmartACT™ (Patented)

Ground-breaking technology that reduces the ramping process and the job running time, which translates into higher productivity.



### Pass-through Front & Rear Doors (Optional)

Convenient front and rear door open design enables loading of extremely long working pieces with ease and extends business flexibility.



### User Friendly Driver Interface

Starting from end users' view, GCC driver evolves into a brand new design with the intuitive interface to favor each user.

## GCC LaserPro S400 Application

