

Optional Items

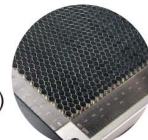
265018410G(02)



Pass-through
Door Switch Module



SmartGUARD™
Fire Alarm (Patented)



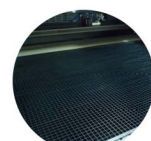
Honeycomb Tables



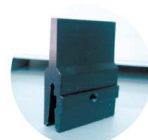
External Control
Interface Board



Air Extraction
System



Grid Cutting
Table



Supporting Pin Kit





339-288-1613

Laser Cutter

GCC LaserPro X500III Pro

Professional Cutting Performance at The Best Value

Specification				
Model Name		X500III Pro		
Laser Source		100W	130W	150W
		Sealed CO ₂ Laser		
Laser Cooling		Water Cooled		
Working Area	w/o Honeycomb Table	51 x 36 in. (1300 x 916 mm)		
	with Honeycomb Table	50.3 x 35.2 in. (1280 x 896 mm)		
Max. Part Size (L x W x H)	w/o Cutting Table	52.9 x 36.0 x 2.1 in. (1346 x 916 x 55 mm)		
	Doors Open	52.9 x ∞ x 1.1 in. (1346 x ∞ x 30 mm)		
	With Honeycomb Cutting Table	48.8 x 32.2 x 1.1 in. (1240 x 818 x 30 mm)		
	With Aluminum Cutting Table	52.1 x 35 x 1.1 in. (1325 x 889 x 30 mm)		
	Dimensions	74.8 x 55.1 x 47.2 in. (1900 x 1400 x 1200 mm)		
Driver		Closed-loop DC Servo Control		
Maximum Cutting Speed*		40 IPS		
Speed Control		Adjustable from 0.1~100% (Up to 16 color-linked speed settings per job)		
Power Control		Adjustable from 0~100% (Up to 16 color-linked speed settings per job)		
Engraving Capability		256-level gray scale image processing capability		
Distance Accuracy		0.254 mm or 0.1% of move, whichever is greater		
Z-Axis Movement		Manual		
Resolution (DPI)		Available 125, 250, 300, 500, 600, 1000		
Interface		10 Base-T Ethernet USB Type-A 2.0  – For USB storage (Max. 32GB capacity, FAT file system) USB Type-B 2.0  – For connecting with the computer		
Focus Lens		Standard 2",Optional 3"		Standard 3",Optional 2"
Display Panel		4-line LCD panel showing current file name, total working time, laser power, engraving speed, file(s) loaded into memory buffer, setup and diagnostic menus.		
Safety		Class I Laser Product Compliant with EN60825, Class II Laser Product Compliant with CDRH, 2006/42/EC Machinery Directive Compliance, Class 4 Laser Product Compliant with CDRH with the optional pass-through door module		
Cutting Table		Knife-shaped cutting bars with down vacuum and scrap collecting funnel		
Operation Voltage		200-240VAC, 50/60Hz auto switching, Max.10A		
Air Exhaust System		External exhaust system with minimum flow rate 2160m³/h (CFM 1273 ft³/min) is required, 2.5kPA negative pressure (Pure-Air PA-2400FS @ 8" exhaust port)		

* Speed does not equal to throughput. See dealer or visit www.GCCworld.com for more details.

△ Specifications are subject to change without prior notice.

*** Please use certified brands by GCC for LaserPro USB storage, kindly refer to GCC User Manuals for more details.

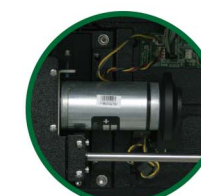
Authorized Dealer



HQ- Greensboro
Sales@jorlink.com
336-288-1613



www.GCCworld.com

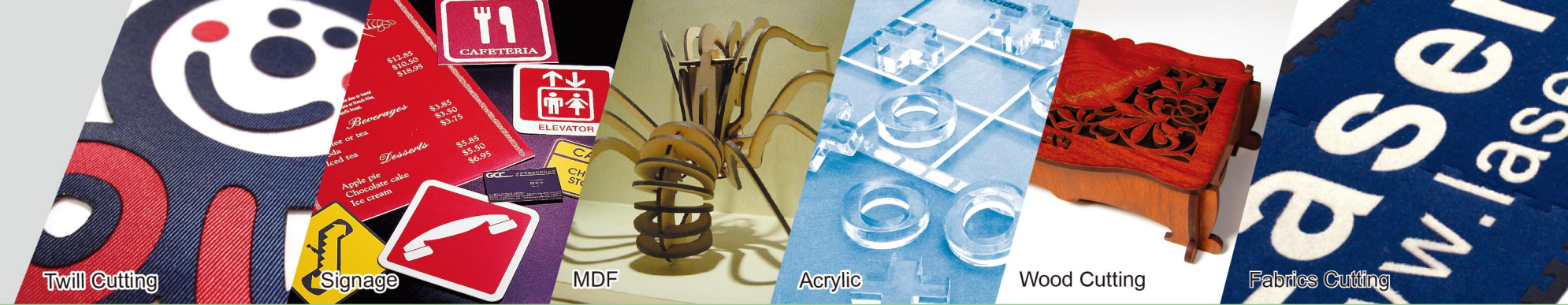


X500III Pro

- Spacious 51.1 x 36.1 mm working area
- 1.6X beam expander for uniformity of line width and spot size
- DC Servo Motor Technology for precise movement control
- Uniquely innovative user-friendly features
- Fullfill versatile cutting and engraving applications



GCC Headquarters	4F-1., No.236, Fude 2nd Rd., Xizhi Dist., New Taipei City 22151, Taiwan	886-2-6616-6692	Fax : 886-2-2694-6875
GCC China	No.1, Chen Feng Road, Yushan, Kunshan, Jiangsu 215300, China	86-512-5726-1515	Fax : 86-512-5726-1518
GCC Europe B.V.	Eglantierbaan 43-45, 2908 LV, Capelle a/d IJssel, The Netherlands	31-10-458-9367	
GCC America, Inc	20453 E Valley Blvd. Walnut, CA 91789, USA	1-909-718-0248	Fax : 1-909-718-0251
		US & Canada Only	Toll Free: 1-888-284-5211



Laser Cutter

GCC LaserPro X500III Pro



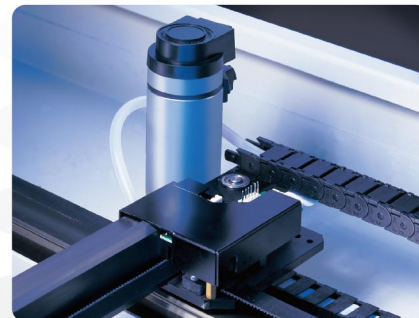
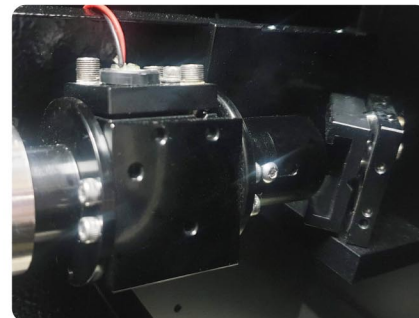
GCC LaserPro X500III Pro

Embrace the cutting technology from the GCC LaserPro X500III designed and engineered for professional use. Moreover, GCC releases X500III Pro version for advanced cutting quality and uniformity of line width by adding one beam expander and red beam combiner.

Packed with several user-friendly features, the GCC LaserPro X500III Pro offers high product performance in terms of both durability and feasibility. The X500III Pro model combines cutting and engraving capabilities to give users a versatile system.

Beam Expander

X500III Pro includes one 1.6X beam expander for uniformity of line width that presents outstanding quality and reliability.

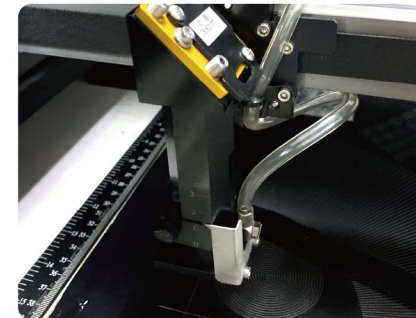


Closed-loop DC Servo Technology

The X500III Pro utilizes high performance closed-loop DC servo motors for precise and fast carriage movement combined with a reliable motion system to produce exceptionally accurate outputs.

New Design of X500III Pro Carriage

Advanced X500III Pro carriage design to increase the stability of the carriage movement, elevate the performance of X500III Pro.



Key Switch & Emergency Stop

Key switch safeguards the machine from unauthorized use. Prominent emergency button located on the top of the machine allows operators to stop the laser and the motion carriage immediately to provide a safe operating environment.

Knife-shaped Cutting Table

Unique cutting table with tipped bars that can be easily adjusted without tools to create different levels of working depths. The cutting table of X500III Pro reduces laser reflections and delivers clear cutting edge.



Drag-N-Play

The "Drag-N-Play" feature greatly reduces complex set up procedures and allows users to directly drag the lens carriage to the starting point of a job.

Intuitive Control Panel Interface

A control panel with coherent hot-key design and graphic icon displays that allows you to directly change the laser parameter setting, set jobs to repeat unlimited times, queue job, delete jobs, and more.



Versatile Cutting & Engraving Capability

X500III Pro delivers high cutting quality with LaserPro's unique laser firing control technology. X500III Pro can cut through 20 mm acrylic in a single pass. Better than that, the grayscale technology allows X500III Pro to process 256-level grayscale image with vivid engraving quality.